



MANDATORY DISCLOSURE

As per guidelines of Higher & Technical Education Dept., Govt. Of Maharashtra

Sr. No.	Compliance	Status
1	Prospectus	https://csmu.ac.in/wp-content/uploads/2025/07/CSMU_Brochure_2025-26.pdf
2	About HEI/University a) Aboutus	Name: Chhatrapati Shivaji Maharaj University Address: Near Shedung Toll Plaza, Old Mumbai-Pune Highway, Panvel, Navi Mumbai, Maharashtra Pincode – 410221. Contact No.: +91-8447733259 Email ID: info@csmu.ac.in registrar@csmu.ac.in Website: https://csmu.ac.in
	b) Act, Statutes, Ordinances	Chhatrapati Shivaji Maharaj University, Act, 2018 Link: https://csmu.ac.in/act-statutes-ordinances/ Maharashtra Act NO VIII of 2024: https://csmu.ac.in/act-statutes-ordinances/ Chhatrapati Shivaji Maharaj University, Statutes & Ordinances Link: https://csmu.ac.in/act-statutes-ordinances/
3	<ul style="list-style-type: none">Initially Submitted DPR:(in case of a self-financed university)Last Year Annual report:	https://csmu.ac.in/wp-content/uploads/2024/10/CSMU-AR-2022-23-Merged.pdf
4	a) Institutional Development Plan (Next Five years) <ul style="list-style-type: none">Constituent Units/other campus (Wherever applicable)	i. Full implementation of CBCS student-centric curriculum to all programmes. ii. Implementation of NEP in all avenues. iii. Starting Multidisciplinary courses as per industry demands and placement feedbacks iv. Collaboration with HEI and industries, especially with institutes abroad to extend the reach of the University. v. Special focus on foreign student enrolment and exchange programmes. vi. University recognizing, identifying, and fostering the unique capabilities of each student and promote them for their

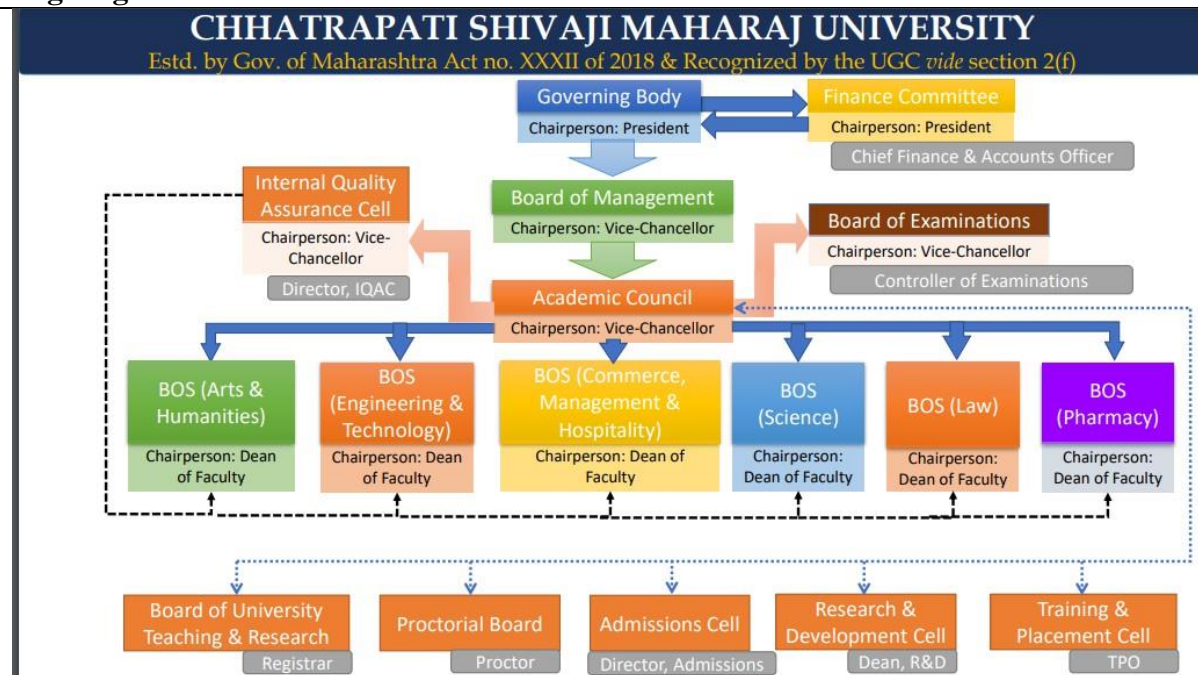


		<p>holistic development and provide required facilities for those;</p> <p>vii. University has given opportunities of flexibility to their student so that they can select their learning courses and programmes, and thereby choose their own paths in life according to their talents and interests;</p> <p>iii. Towards the success of its vision and mission university introduced multidisciplinary and holistic education across the sciences, engineering, computer science, fashion and design, management, social sciences, arts, humanities, pharmacy, law, library science and sports for a multidisciplinary world;</p> <p>ix. University develops the environment amongst the student on conceptual understanding rather than rote learning, critical thinking to encourage logical decision-making and innovation; ethics and human & constitutional values, and life skills such as communication, teamwork, leadership, and resilience;</p> <p>x. University has introduced all modern technology in teaching and learning, removing language barriers, increasing access for weaker or average students; Training of Faculty will be conducted in a bi-annual basis to improve usage of modern ICT techniques and Pedagogical Methods.</p> <p>xi. University will welcome diversity in student and faculty bodies while with utmost respect for the local context in all curricula, pedagogy, and policy.</p>
b) AISHE code		U-0987



	Link to the proforma c) Accreditation / Ranking (NAAC, NIRF) Details of IQAC (act 6(7)) - <ul style="list-style-type: none"> • NAAC • Accreditation status: NAAC (act 6(6)) • Validity of Accreditation: 	NAAC Accreditation & NIRF Ranking are Under Process
5	Trust (whom so ever applicable for) <ul style="list-style-type: none"> • Name and address of the sponsoring body 	https://csmu.ac.in/administration (See bottom of the webpage for Administrative bodies detail)
	Administration (Profiles with photographs) <ul style="list-style-type: none"> • President • Vice Chancellor • Registrar • Finance Officer • Controller of Examination • Academic Council, • Board of Studies 	https://csmu.ac.in/administration/

Organogram



6	Academic Leadership (Dean/	Faculty pages (See bottom of the page for Dean info)
---	-----------------------------------	---



	HoD of Schools/ Departments/ Centers)	Faculty of Arts https://csmu.ac.in/faculty-of-arts-humanities-and-communication/ Faculty of Engineering https://csmu.ac.in/faculty-of-engineering-and-tchnology/ Faculty of Pharmacy https://csmu.ac.in/faculty-of-pharmacy-2/ Faculty of Law https://csmu.ac.in/departement-of-law-2/ Faculty of Science https://csmu.ac.in/faculty-of-science-2/ Faculty of Commerce, Management & Hospitality https://csmu.ac.in/faculty-of-commerce-management-and-hospitality/ For more information can be found on tabular faculty list https://csmu.ac.in/wp-content/uploads/2024/10/Faculty-list-1.pdf																																							
7	Academics <ul style="list-style-type: none">• Programmes• Placements• Library: Basic information at a glance• No. of Library books/ Titles/ Journals available (Programme-wise) List of online National/ International Journals subscribed• E-Library facilities• National Digital Library (NDL) subscription details	Faculty-wise Details of Programme Offered with duration, intake and fees. https://csmu.ac.in/programmes-offered-and-fee-structure/ Placement Details https://csmu.ac.in/placement-overview/ Internship & Placement Team https://csmu.ac.in/internship-training/																																							
		<table><tr><th></th><th>Discipline</th><th>Engineering & Science</th><th>Pharmacy</th><th>Law</th><th>Humanities</th><th>Commerce & Management</th><th>Total</th></tr><tr><td>1</td><td>No. of Library books</td><td>12764</td><td>5531</td><td>4467</td><td>9356</td><td>2436</td><td>34554</td></tr><tr><td>2</td><td>No. of Journals</td><td>911</td><td>389</td><td>132</td><td>911</td><td>642</td><td>2985</td></tr><tr><td>3</td><td>E-Library facilities</td><td colspan="6">Digital library with 20 terminals with hi speed wi-fi connection Delnet access with 4000+ e-journals</td></tr></table>		Discipline	Engineering & Science	Pharmacy	Law	Humanities	Commerce & Management	Total	1	No. of Library books	12764	5531	4467	9356	2436	34554	2	No. of Journals	911	389	132	911	642	2985	3	E-Library facilities	Digital library with 20 terminals with hi speed wi-fi connection Delnet access with 4000+ e-journals												
	Discipline	Engineering & Science	Pharmacy	Law	Humanities	Commerce & Management	Total																																		
1	No. of Library books	12764	5531	4467	9356	2436	34554																																		
2	No. of Journals	911	389	132	911	642	2985																																		
3	E-Library facilities	Digital library with 20 terminals with hi speed wi-fi connection Delnet access with 4000+ e-journals																																							
8	NEP implementation strategies <ul style="list-style-type: none">• Multidisciplinary curriculum (provide link)• Credit structure	Implementation of NEP 2020: <ul style="list-style-type: none">• Seminars /Webinars and various activities to Implement National EducationPolicy-2020• Familiarizing university faculties to understand goals, objectives, and key recommendations of NEP-2020:• To effectively implement the NEP 2020, it is important to create awareness and provide guidance to faculty members, administrators, policymakers, and students and in this orderwe organized webinars and seminars to disseminate information and facilitate discussions on the key																																							



		<p>principles and strategies outlined in the NEP-2020.</p> <ul style="list-style-type: none"> • University has adapted the guideline on NHEQF and CFCS for four-year UG programme (FYUP) to promote and successfully implementation of NEP-2020 Policy. • Apart from this our team is thoroughly studying the NEP-2020 document to understand its goals, objectives, and key recommendations. This will help our university to know the vision behind the policy and its implications for higher education in our University for the comprehensive development of youth. <p>Core Team to Establish NEP-2020: Our university formed a dedicated team of administrators, faculty members, and stakeholders to lead the implementation process. This team should include individuals from various disciplines and should be responsible for planning, execution, and monitoring to Implement NEP-2020 at our University. Apart from this our University developed a system to monitor and evaluate the implementation of NEP-2020. Establish quality assurance mechanisms to assess the effectiveness of the curriculum, teaching practices, and student outcomes. Collect feedback from students, faculty, and stakeholders to drive continuous improvement.</p> <p>Adapting Curriculum as per the NEP-2020: We are in process to review the existing curriculum and make necessary changes to align it with the NEP-2020 recommendations. Emphasize interdisciplinary and holistic learning, skill development, and experiential learning opportunities. Incorporate flexibility and choice-based credit systems, allowing students to pursue subjects of their interest.</p> <p>Admission Paths for Undergraduate Programme: Students who have successfully completed Grade 12 School Leaving Certificate shall be eligible for admission to a first-degree programme. The admission shall be made on merit on the basis of criteria keeping in view the guidelines/norms in this regard issued by the UGC and other statutory bodies concerned and considering the reservation policy issued by the government concerned from time to time. The University is under process to implement the guidelines for Multiple Entry and Exit in Academic Programmes offered in Higher Education Institutions. Student enrolment shall be in accordance with the academic and physical facilities available keeping in mind the norms regarding the student-teacher ratio, the teaching-non-teaching staff ratio, laboratory, library, teaching-learning tools. The in-take capacity shall be determined at least three</p>
--	--	---



		months in advance by through academic bodies in accordance with the guidelines/norms in this regard issued by the UGC and other statutory bodies concerned so that the same could be suitably incorporated in the admission brochure for the information of all concerned and uploaded on the institutional website.						
9	Admissions & Fee <ul style="list-style-type: none">Prospectus (Provide link and upload soft copy of Prospectus) Admissions procedure (provide Link)Course wise fee structure Prospectus costEntrance test fee	https://csmu.ac.in/wp-content/uploads/2024/09/Brochure-CSMU.pdf Prospectus includes course-wise fee structure Application for admission fee: Rs. 1100/- (includes prospectus and entrance test)						
10	Faculty (Provide information of Faculty in tabular form) Course/ Branch wise list	https://csmu.ac.in/wp-content/uploads/2024/10/Faculty-list-1.pdf						
11	Permanent Faculty: Students Ratio	25:1						
12	International students and collaboration: <ul style="list-style-type: none">Admission guidelines for international students (wherever applicable) Facilities provided to international studentsFee structure for various programs Fee refund policy	International Admission https://csmu.ac.in/international-admissions/ Fee Refund Policy (See the admission process webpage) https://csmu.ac.in/process-of-admission/						
13	Name and duration of Programme(s) having Twinning and Collaboration with Foreign University(s) and being run in the same Campus.	Nil						
14	Name and duration of Programme(s) having Twinning and Collaboration with Foreign University(s) and being run in the same Campus.	Nil						
15	If there is Foreign Collaboration, give the following details, if any:	Nil						
16	Research <ul style="list-style-type: none">Research and Development Cell PublicationsPatents (published/ Applied)	<table><tr><td>Publications (Books/Chapter/Title)</td><td>33</td></tr><tr><td>Patents</td><td>7</td></tr><tr><td>Research Paper Published</td><td>107</td></tr></table>	Publications (Books/Chapter/Title)	33	Patents	7	Research Paper Published	107
Publications (Books/Chapter/Title)	33							
Patents	7							
Research Paper Published	107							



	<ul style="list-style-type: none"> Foreign Collaboration (wherever applicable) Industry Collaborations Shodhganga and Shodhgangotri (provide links) 	<p>Shodhganga Handle https://shodhganga.inflibnet.ac.in/handle/10603/506688</p>
17	Infrastructure (Information of Infrastructure and Other Resources Available) <ul style="list-style-type: none"> Number of Class Rooms and size of each 	<p>No. of Class Rooms : 124 Size of each Class Room : 67 Sq. M</p> <p>Detail of Classroom and laboratories https://csmu.ac.in/wp-content/uploads/2024/10/Details-of-Classrooms-and-Department-infrastructure.pdf</p>
	<ul style="list-style-type: none"> Number of Tutorial rooms and size of each 	<p>No. of Tutorial rooms: 16 Size of Tutorial Rooms: 35 Sq. M each</p>
	<ul style="list-style-type: none"> Number of Laboratories and size of each 	<p>No. of Laboratories : 84 Size of Laboratories: 67 Sq. M</p>
	<ul style="list-style-type: none"> Number of Drawing Halls with capacity of each 	<p>No. of Drawing Halls : 3 Capacity of Drawing Halls: 80 each</p>
	<ul style="list-style-type: none"> Number of Computer Centers with capacity of each 	<p>No. of Computer Centers: 3 Capacity of CC : 240 + 30 + 80</p>
	<ul style="list-style-type: none"> Central Examination Facility, Number of rooms and capacity of each 	<p>No. of Central Examination Facility: 8 Capacity of each CEF : 60 each</p>
	<ul style="list-style-type: none"> Online examination facility (Number of Nodes, Internet band width, etc.) 	<p>Computer centre is equipped to use as online examination facility. IBW 100+100 MBPS (100 MBPS dedicated student connection)</p>
	<ul style="list-style-type: none"> Barrier Free Built Environment for disabled and elderly persons 	<p>Availability of Ramp in the entrance area, Lift for each floor and toilet facility for physically challenged persons.</p>
	<ul style="list-style-type: none"> Fire and Safety Certificate Hostel Facilities 	<p>Available</p>
	<ul style="list-style-type: none"> Library 	<ul style="list-style-type: none"> 4 Libraries Area of Library : 3325 + 2431 + 35 + 35 Sq. Ft. A well-equipped Digital Library with 10 terminals Apart from it, 02 dedicated system for official work. Fully automated in E-Granthalay Library Software Wi-Fi Facility 24x7
	Laboratory and Workshop <ul style="list-style-type: none"> List of Major Equipment/Facilities in each Laboratory/Workshop List of Experimental Setup in each Laboratory/Workshop 	



Detail of Lab Equipment: https://csmu.ac.in/wp-content/uploads/2024/10/Laboratories-Equipments.pdf		
Sr. No.	Lab Details	Equipment
1	Department of Applied Social Sciences	Required instruments are available
2	Department of Basic Sciences	1 General Physics + Optics Lab 1 Computational Lab (Shared with Engg.) 1 Electronics Lab 1 Inorganic Chemistry Lab 1 Analytical Chemistry Lab 1 Organic Chemistry Lab 1 Instrumentation Lab
3	Department of Business Management	2 smart class with projector equipped classroom
4	Department of Commerce	1 Language lab 4 Computers with headsets
5	Department of Civil Engg.	9 Labs
6	Department of Computer Science & Engg.	6 labs with 200 working terminals
7	Department of Computer Science & Information Technology	4 labs (CSMIT) with 80 working terminals
8	Department of Design & Arts	<ul style="list-style-type: none"> Fashion Design Lab Graphics Design Computer Lab with updated software
9	Department of Electrical & Electronics Engg.	1 Basic Electronics Lab 1 Digital Lab 1 Basic Electrical Lab
10	Department of Hospitality Management	1 Basic Training 1 Restaurant 1 Bakery
11	Department of Humanities	1 Language Lab required
12	Department of Journalism & Mass Communication	1 Video recording/ photography studio 1 Full frame Camera, Outdoor recording kit, Computers for studio, recording apparatus
13	Department of Law	1 Moot Court
14	Department of Life Science & Biotechnology	<ul style="list-style-type: none"> 4 Dedicated & 2 shared with Pharmacy Department Bioinformatics, Gene technology software 1 Plant Tissue Culture Lab 1 Computational Lab



	15	Department of Mechanical Engineering	<ul style="list-style-type: none"> 9 Labs
	16	CSMU School of Pharmacy	<ul style="list-style-type: none"> 8 Labs
		<ul style="list-style-type: none"> Computing Facilities Internet Band width Innovation Cell 	Computer centre is equipped to use as online examination facility. IBW 100+100 MBPS (100 MBPS dedicated student connection)
		Social Media Cell <ul style="list-style-type: none"> List of facilities available To upload the respective short video (- min) of Infrastructure and facilities available w.r.t the courses in the website 	University has well equipped Social Media Cell with updated computer system with all the latest software facilities.
		<ul style="list-style-type: none"> Games and Sports Facilities Teaching Learning Process 	University has following games and sports facility <ul style="list-style-type: none"> Modern Gymnasium Cricket Ground Football Ground Volley ball Ground Indoor Games Facilities Swimming pool
		<ul style="list-style-type: none"> Academic Time Table with the name of the Faculty members handling the Course 	Time tables are available through student ERP
18		Student Life <ul style="list-style-type: none"> Available hostel accommodation Fellowships/ Scholarships (provide details)Academic Bank of Credits (provide link) Digi Locker NAD Portal (provide link) National Scholarship Portal 	https://csmu.ac.in/students-corner/ University has registered in Academic Bank of Credit NAD ID : NAD007357 ABC ID: 7059 NSP: 52 students availed scholarship through
19		Campus Harmony & Well Being	For student Grievance, anti-ragging, equal opportunities, internal complaints etc. https://csmu.ac.in/students-corner/
20		Alumni Alumni Association (provide link of portal wherever applicable) Alumni Co-ordination Cell	https://csmu.ac.in/alumni



21	Information Corner RTI: Details of CPIO and Appellate authority (wherever applicable) <ul style="list-style-type: none">• Circular and Notices• Announcements• Newsletters• News, Recent events & Achievements Job openings• Reservation Roster (wherever applicable)	<p>Student announcement is made in Camu ERP accessible with student login.</p> <p>Website Notice board: https://csmu.ac.in/notices/</p> <p>Newsletter (Vol 1 Issue 1): https://csmu.ac.in/wp-content/uploads/2024/10/NewsletterVII1-1.pdf</p>
----	---	--